

HO-312

## Hi Ho Silver (Wexford House Shop)

### **Architectural Survey File**

This is the architectural survey file for this MIHP record. The survey file is organized reverse-chronological (that is, with the latest material on top). It contains all MIHP inventory forms, National Register nomination forms, determinations of eligibility (DOE) forms, and accompanying documentation such as photographs and maps.

Users should be aware that additional undigitized material about this property may be found in on-site architectural reports, copies of HABS/HAER or other documentation, drawings, and the “vertical files” at the MHT Library in Crownsville. The vertical files may include newspaper clippings, field notes, draft versions of forms and architectural reports, photographs, maps, and drawings. Researchers who need a thorough understanding of this property should plan to visit the MHT Library as part of their research project; look at the MHT web site ([mht.maryland.gov](http://mht.maryland.gov)) for details about how to make an appointment.

All material is property of the Maryland Historical Trust.

***Last Updated: 02-07-2013***

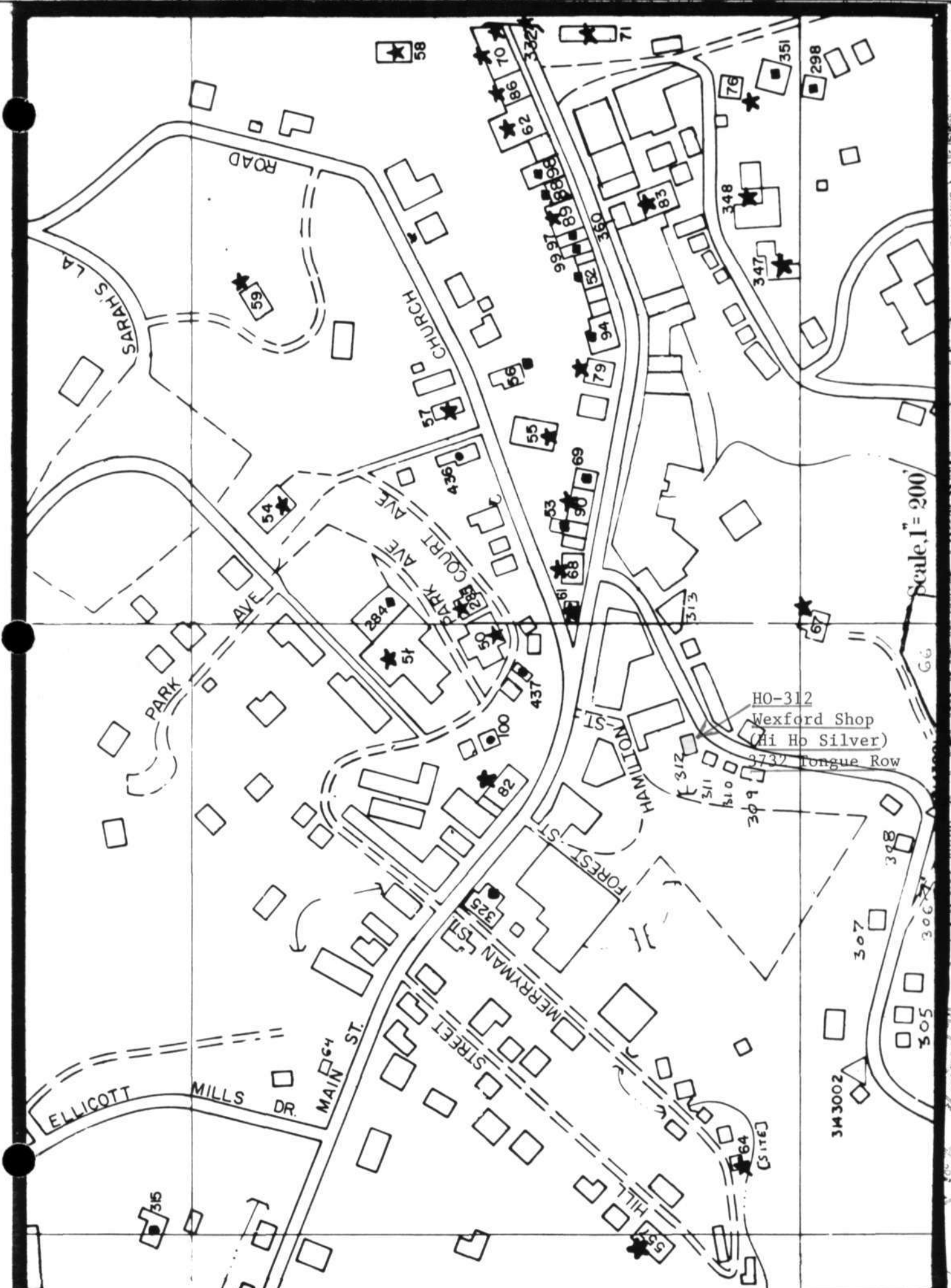
HO-312  
Hi Ho Silver (Wexford House Shop)  
3732 Tongue Row  
Ellicott City  
Private

Facing southeast, this two-story, three-bay frame commercial building once had a central door with 6/6 sash flanking windows, and three 6/6 sash windows on 2nd floor. Now, the 2nd floor 6/6 windows remain, but the 1st floor has a door in the southwest bay and a polygonal shop window covering the right two bays. The two-light transom above the door may be the original, moved from the center. The asbestos siding has been removed from the front facade.

The northeast gable end has one 6/6-sash window on each floor.

The rear (northwest) facade has three floors. The 2nd and 3rd floors of the right half project slightly above the 1st floor and out from the left half. This right half has one 6/6 sash window centered on each floor. The left half has two 6/6 sash windows on each floor.

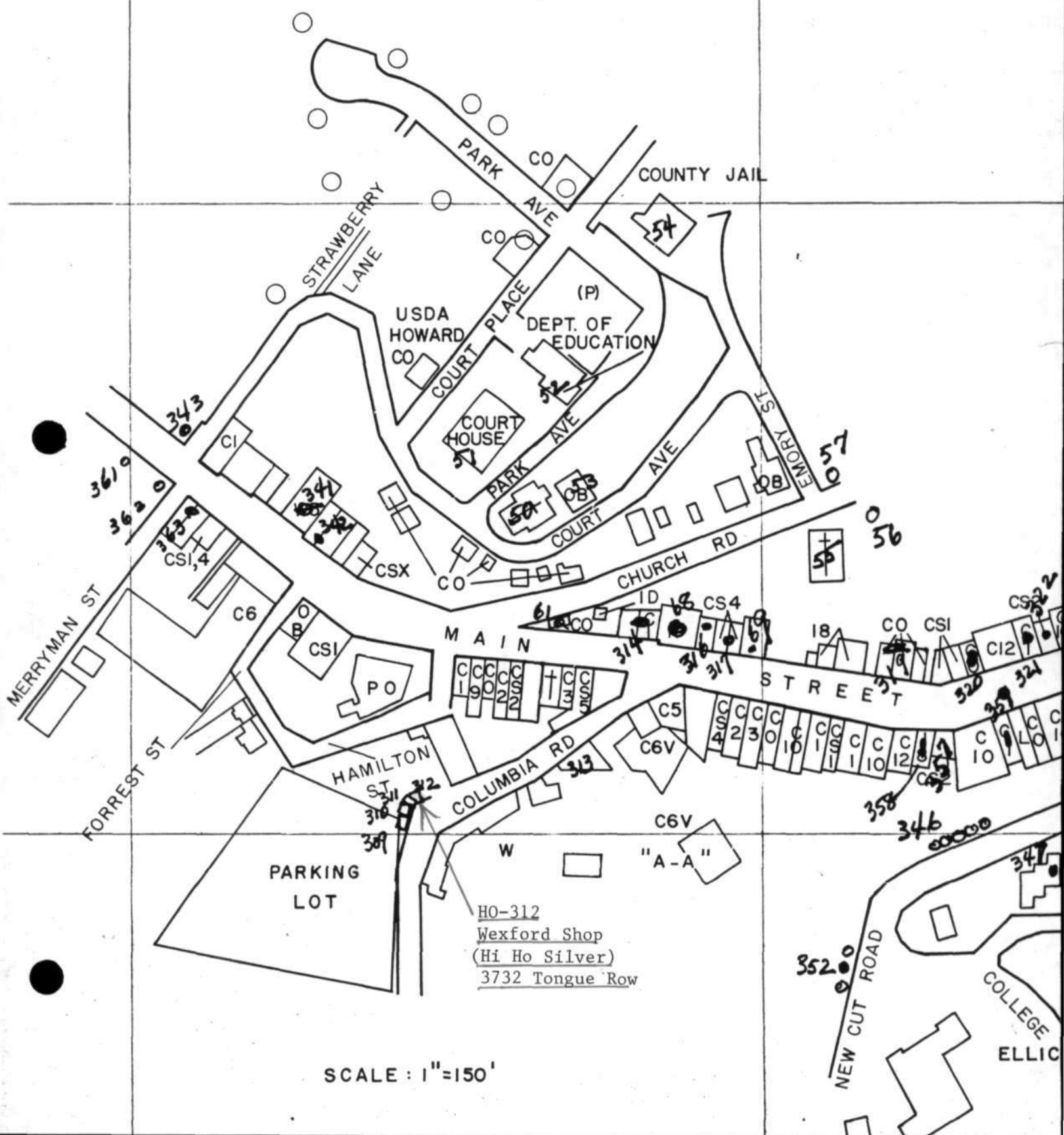
The southwest side of the building projects about 6 feet beyond its neighbor (HO-311). The 2nd and 3rd floors of the exposed side have one 6/6 sash window centered on each floor.



HO-312  
 Wexford Shop  
 (Hi Ho Silver)  
 3732 Tongue Row

Scale, 1" = 200'

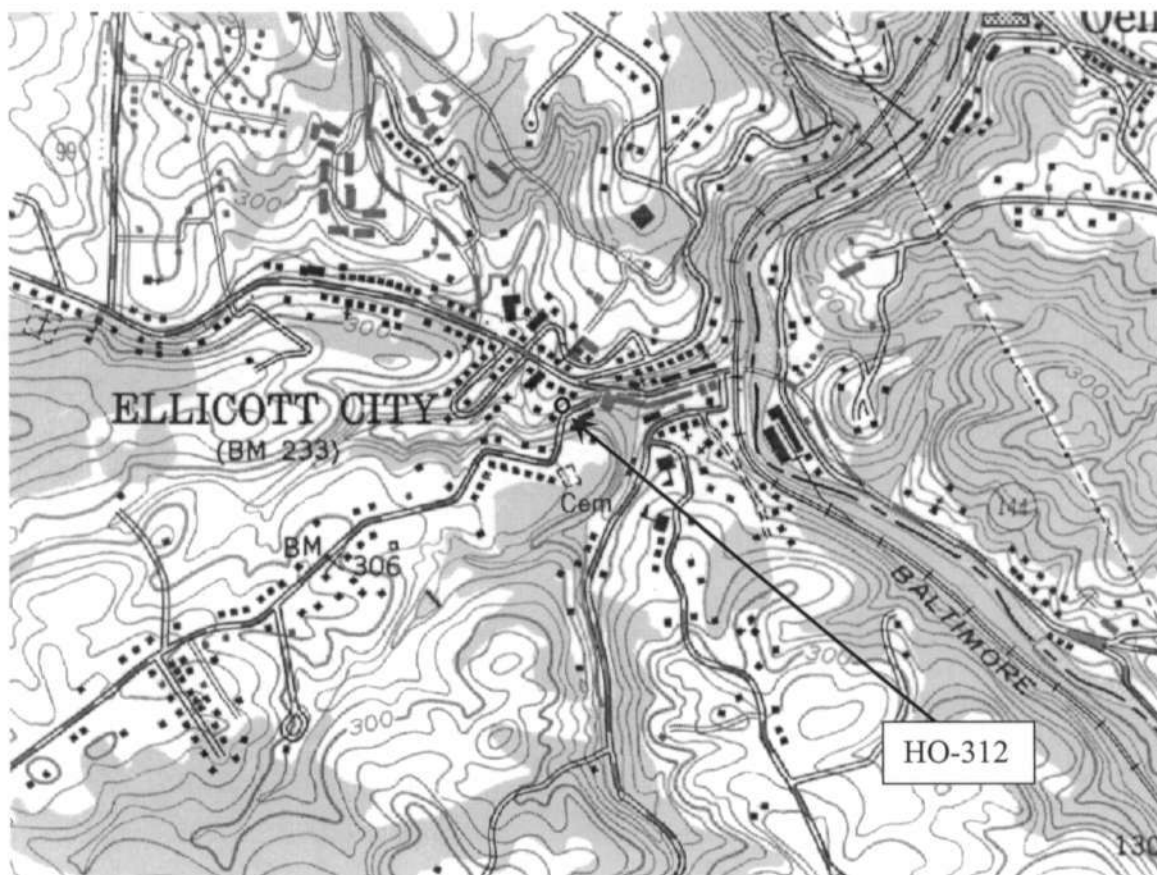
ST. MARYS.  
 SEMINARY  
 PARADISE  
 WESTERN VOC. COLLEGE  
 GERMANY  
 FRI. BARRICK VILLAGE  
 HILL ST.  
 MERRIMAN ST.  
 FOREST ST.  
 HAMILTON ST.  
 COURT AVE.  
 PARK AVE.  
 CHURCH AVE.  
 SARAH'S LN.  
 ELLICOTT MILLS DR.  
 MAIN ST.  
 HILL ST.  
 TONGUE ROW



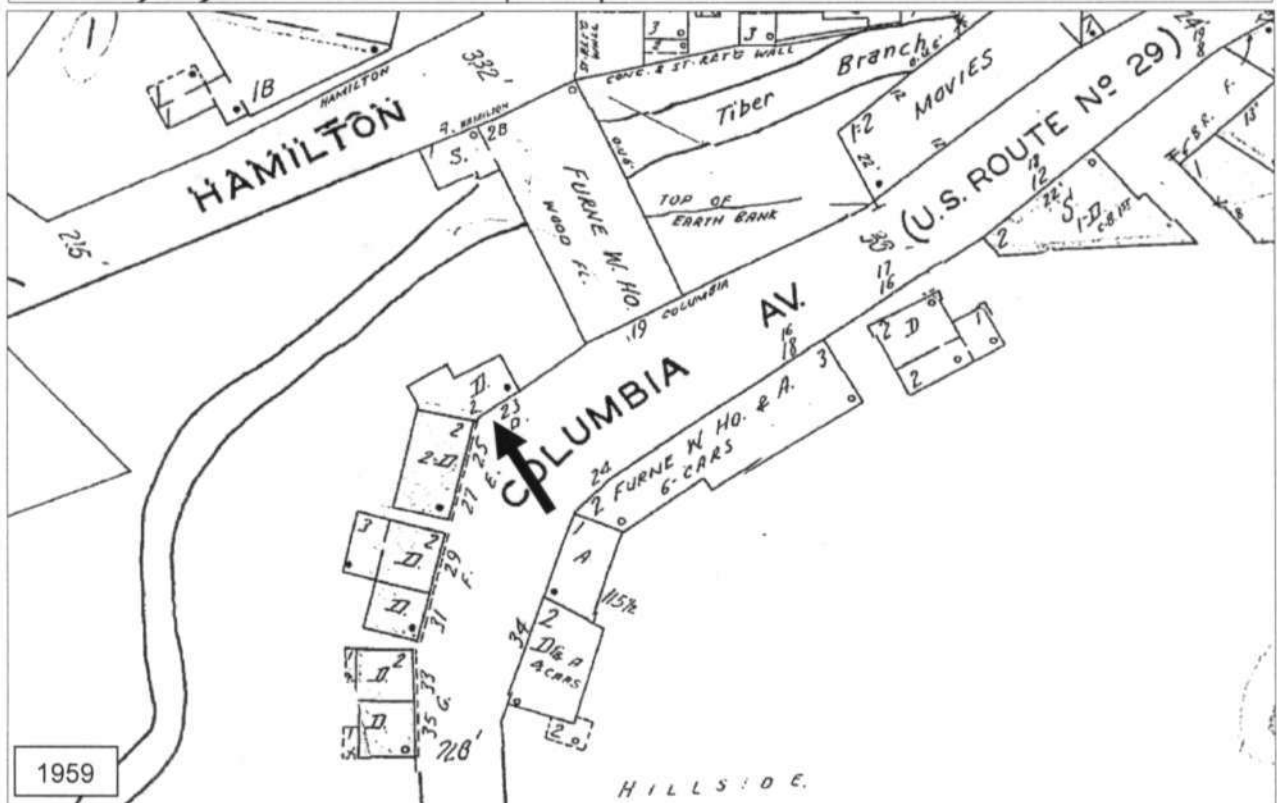
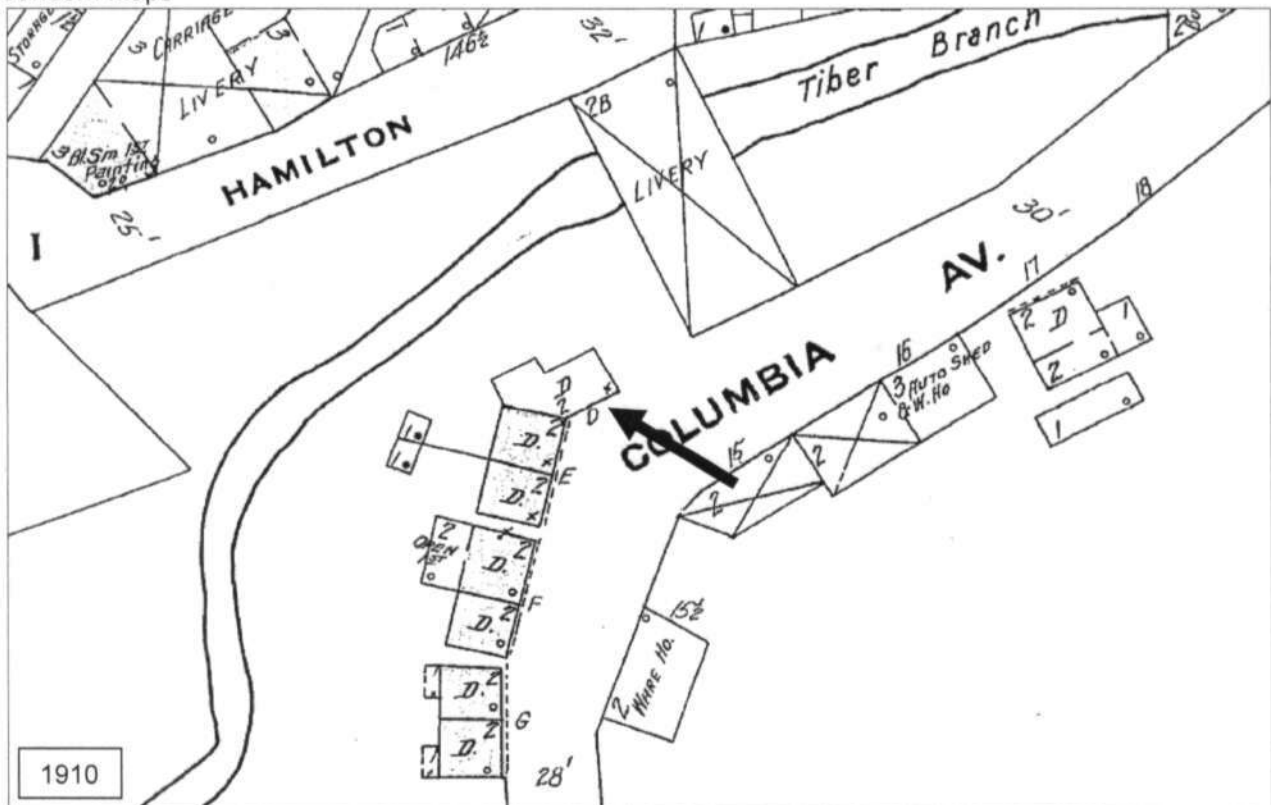
HO-312  
 Wexford Shop  
 (Hi Ho Silver)  
 3732 Tongue Row

SCALE : 1" = 150'

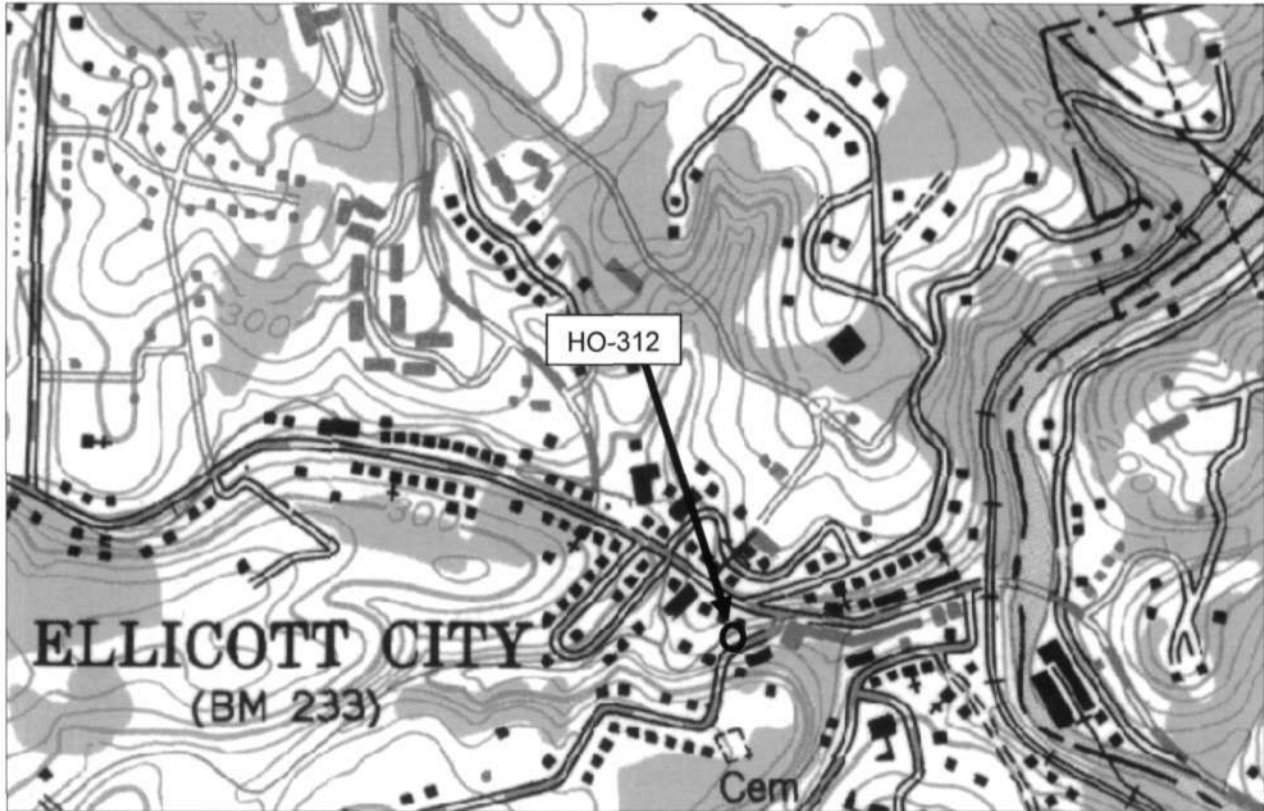
HO-312  
Hi Ho Silver (Wexford House Shop)  
3732 Old Columbia Pike  
Ellicott City  
Ellicott City Quad.  
Howard County



HO-312  
Hi Ho Silver (Wexford House Shop)  
3732 Tongue Row, Ellicott City  
Sanborn Maps

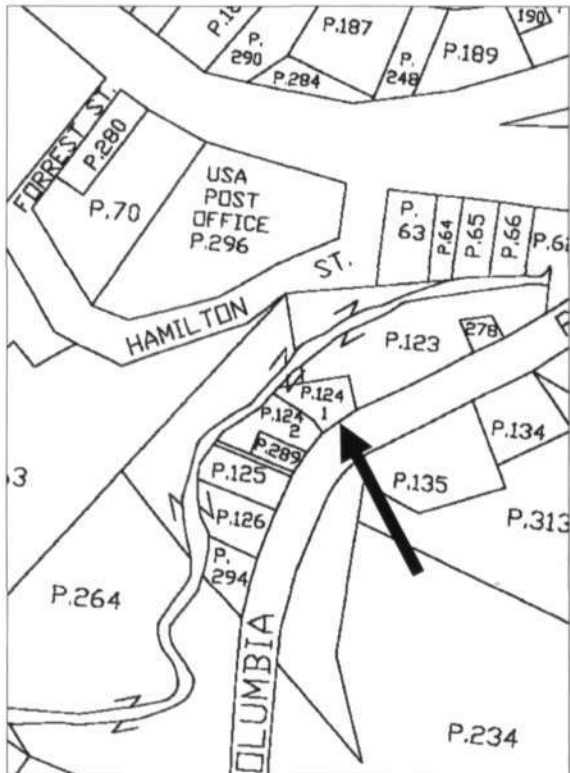


HO-312  
Hi Ho Silver (Wexford House Shop)  
3732 Tongue Row, Ellicott City  
Ellicott City quad 1953, Photorevised 1966 and 1974



Tax Map 25A, Parcel 124, Lot 1

National Web Map Service 6" Orthophoto Map, c. 2010



HO-312  
Hi Ho Silver (Wexford House Shop)  
3732 Tongue Row, Ellicott City  
Photo by Jennifer K. Cosham, 11/28/2012  
Southeast elevation



HO-312

Hi Ho Silver (Wexford House Shop)

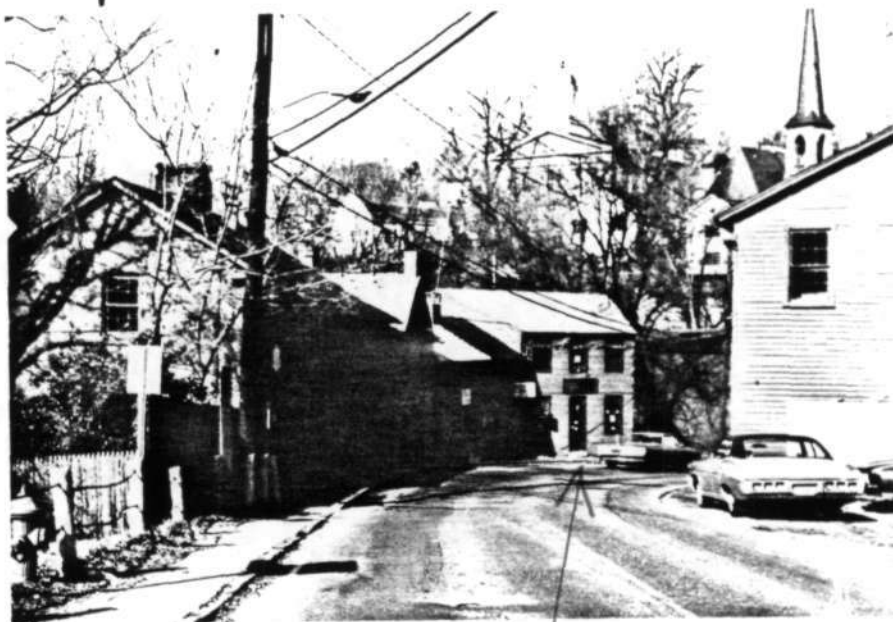
3732 Tongue Row, Ellicott City

Photo by Jennifer K. Cosham, 11/28/2012

South elevation



HO-312  
 Wexford Shop  
 (Hi Ho Silver)  
 3732 Tongue Row



HO-312

UNITED STATES DEPARTMENT OF THE INTERIOR  
 NATIONAL PARK SERVICE

**NATIONAL REGISTER OF HISTORIC PLACES  
 PROPERTY PHOTOGRAPH FORM**

(Type all entries - attach to or enclose with photograph)

STATE	
COUNTY	
FOR NPS USE ONLY	
ENTRY NUMBER	DATE

SEE INSTRUCTIONS

<b>1. NAME</b>			
COMMON: Columbia Pike Entrance to Ellicott City			
AND/OR HISTORIC: TONGUE ROW			
<b>2. LOCATION</b>			
STREET AND NUMBER: Columbia Pike			
CITY OR TOWN: Ellicott City			
STATE: Md.	CODE 21043	COUNTY: HOWARD	CODE
<b>3. PHOTO REFERENCE</b>			
PHOTO CREDIT: J. HANNON			
DATE OF PHOTO: FEB. 1975			
NEGATIVE FILED AT: MHT (enclosed)			
<b>4. IDENTIFICATION</b>			
DESCRIBE VIEW, DIRECTION, ETC. Tongue Row (on left) Row of Stone Bldgs. early 1800's. Court House upper center - Ho. Co. Hist. Soc. Steeple upper left. Columbia Pike is south access Rd. + Entrance to Town.			



H0.312

Willcott City

Hi Ho Silver  
(Wexford shop)

(now 3732)

3 Ho Tongue Row

88E 11/72